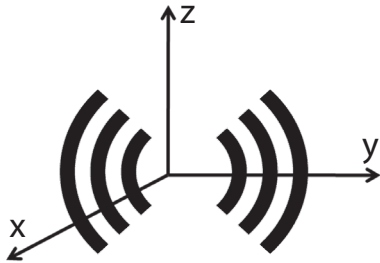
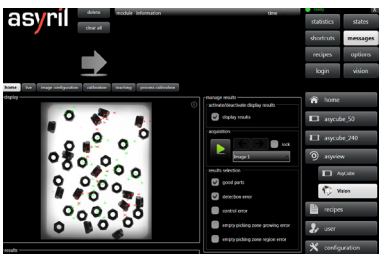
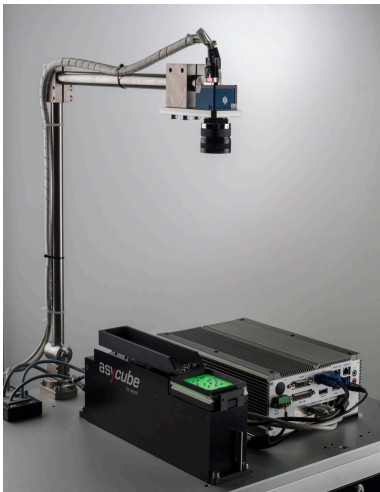


# SmartSight

## Intelligent Visual Part Detection System for Asycube Flexible Feeders



**3-Axis Vibration Technology**  
Innovation by **asyril**



### Advantages

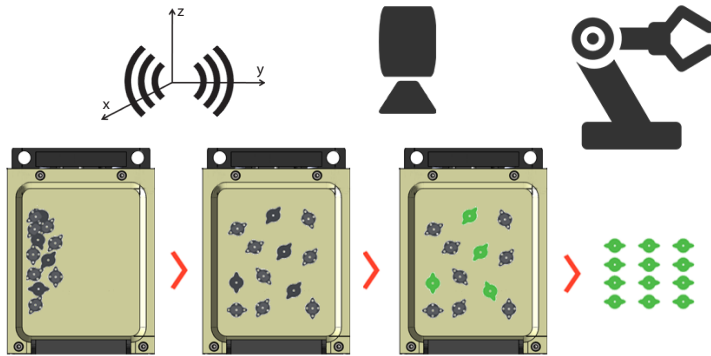
- ▶ **Fast integration** : direct output of part coordinates to the robot, fully automatic control of feeder vibrations and part detection
- ▶ **Quick setup and reduced development times** : get started immediately on your application
- ▶ **Attractive, highly competitive system costs** as up to 7 cameras and 7 Asycube feeders can be controlled with a single SmartSight control unit
- ▶ **Software based on market standard** : proven industrial vision library
- ▶ **Intuitive teaching and configuration** with Asyri's control software
- ▶ **Compatible with any Asycube vibrating platform**
- ▶ **Compatible with any PLC & industrial robot brand**

# SmartSight

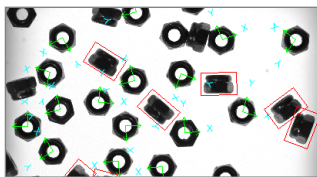
## Intelligent Visual Part Detection System for Asycube Flexible Feeders

### How it works

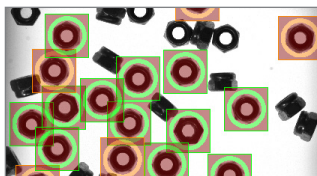
- ▶ SmartSight describes Asyрил's intelligent visual part detection system, ensuring straightforward integration of any Asycube vibrating platform with any industrial robot brand. Comprising Asyрил's powerful visual part detection software, an industrial control PC as well as an optimally configured vision kit including camera, lens and all necessary cabling, SmartSight makes the implementation of high performance flexible feeding systems straightforward.
  - ▶ SmartSight automatically controls the part movements on the feeder (Asycube) as well as the part supply (hopper) based on the vision system feedback about the part locations and quantity.
1. Homogeneous parts separation and orientation using Asyрил's innovative 3-Axis Vibration Technology
  2. Detection of correctly oriented parts by asyрил SmartSight vision system
  3. Part pick from platform and assembly by robot



### Application Example



Detection of part location, orientation as well as pitch-and-toss



Define part gripper geometry and exclusion zones to avoid collisions

Input	Output	ID	X	Y	Z	Theta	Accepted	Reason
00	-6.65635	-13.70763	0.00000	-2.7587	True	None		
01	27.59823	15.70434	0.00000	-0.9375	True	None		
02	10.84061	25.51491	0.00000	-1.2982	True	None		
03	-22.84455	-1.86138	0.00000	1.1948	False	Detection		
04	-19.95992	-5.75591	0.00000	0.5342	False	Detection		
05	-18.67354	16.56145	0.00000	-0.2781	False	Detection		
06	18.06766	10.49035	0.00000	1.3469	False	Detection		
07	33.06099	-2.42469	0.00000	-1.5540	True	None		
08	6.40942	-5.61627	0.00000	-0.7126	False	Detection		
09	17.34833	-15.43261	0.00000	-0.5659	False	Detection		
10	23.41996	8.53149	0.00000	0.8697	False	Detection		
11	-21.64968	-19.64231	0.00000	-0.6446	True	None		
12	-5.90521	-10.81606	0.00000	0.0165	False	Detection		
13	-0.92245	-27.79240	0.00000	2.8331	True	None		
14	26.44099	-5.81890	0.00000	-1.3312	True	None		
15	-1.07374	-0.97440	0.00000	-3.9939	True	None		
16	28.43890	-13.31599	0.00000	-0.3062	True	None		
17	31.95419	10.50325	0.00000	0.2238	True	None		
18	25.89891	-20.33318	0.00000	0.5090	True	None		
19	27.96882	2.56262	0.00000	-1.0006	True	None		
20	-7.16421	8.33166	0.00000	1.2693	True	None		
21	5.71722	5.99004	0.00000	0.0525	True	None		
22	7.21025	14.65096	0.00000	-2.0179	True	None		

Coordinates of accepted parts are easily output to any industrial robot

### About Asyрил

- ▶ Asyрил develops, produces and markets high performance flexible feeding systems for parts and components from <0.1 up to 150 mm in size. Our innovative 3-axis vibration technology can handle bulk parts of any geometry and allows for extremely gentle part feeding.
- ▶ Asyрил's key competences and extensive know-how encompass all three sub-domains of modern part feeding systems: vibration technology, industrial vision and precision robotics. This unique focus combined with our many years of experience enable us to deliver superior, innovative flexible feeding systems for today's and tomorrow automation challenges.

### Specifications

#### FEATURES

Compatible with all materials & component geometries
Component position and orientation recognition (x, y, pitch/toss)
Simple recipe changeover and new parts programming
Integrated calibration procedure
Power supply : 24 V
Communication : TCP / IP

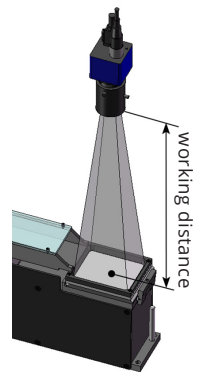
### Working Distance

#### STANDARD RESOLUTION (1.6 MPX)

Feeder	Large Distance		Close Distance	
	[mm]	[-inches]	[mm]	[-inches]
Asycube 530	1520	~ 59.8	800	~ 31.5
Asycube 380	1060	~ 41.7	570	~ 22.4
Asycube 240	860	~ 33.9	510	~ 20.1
Asycube 80	730	~ 28.7	380	~ 15.0
Asycube 50	490	~ 19.3		

#### HIGH RESOLUTION (5 MPX)

Feeder	Large Distance		Close Distance	
	[mm]	[-inches]	[mm]	[-inches]
Asycube 530	1320	~ 52.0	840	~ 33.1
Asycube 380	980	~ 38.6	610	~ 24.0
Asycube 240	840	~ 33.1	600	~ 23.6
Asycube 80	800	~ 31.5	430	~ 16.9
Asycube 50	580	~ 22.8	300	~ 11.8
Asycube 50, Petit champ de vision			390	~ 15.4



#### VERY HIGH RESOLUTION (12 MPX)

Feeder	Large Distance		Close Distance	
	[mm]	[-inches]	[mm]	[-inches]
Asycube 530	1280	~ 50.4	890	~ 35.0
Asycube 380	900	~ 34.4	640	~ 25.2
Asycube 240	760	~ 29.9	530	~ 20.9
Asycube 80			540	~ 21.3
Asycube 50			370	~ 14.6

### Options

Connect and control up to 7 Asycube feeders & 7 cameras with a single control unit

Alternative camera configurations	control part presence, position in gripper, detection of the placement area
Camera	standard resolution (1.6 Mpx) high resolution (5 Mpx) very high resolution (12 Mpx)
Coaxial frontlight	backlight integrated in Asycube feeding platform
Calibration plates	for optics and robot

### Contact

Asyрил SA  
Z.I. du Vivier 22  
1690 Villaz-St-Pierre – SWITZERLAND  
Tel +41(0) 26 653 71 90  
sales@asyril.com – [www.asyril.com](http://www.asyril.com)  
[youtube.com/AsyрилSA](https://www.youtube.com/AsyрилSA)



scan to see the videos